



OPMB Asset Pool Characteristics; Pool A

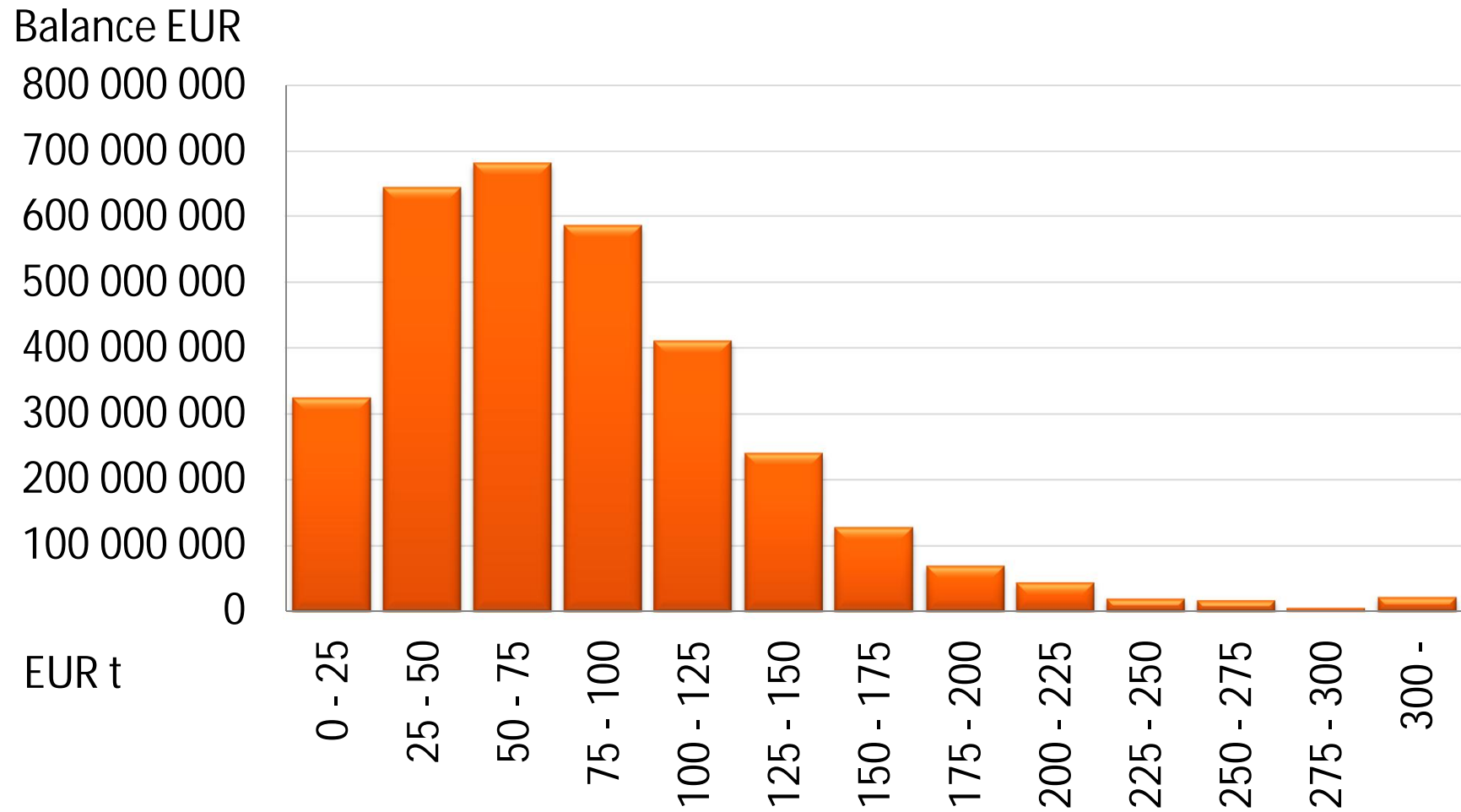
Covered bonds issued before 1 Aug. 2010,
under the Finnish Act on Mortgage Credit Banks 1240/1999

Main Features of OP Mortgage Bank Cover Asset Pool A as of 30 June 2013

- Collateralised by Finnish mortgages.
- Current balance EUR 3.2 billion.
- Weighted Average indexed LTV of 43%
- Average loan size of approximately EUR 45,000
- No loans over 90 days in arrears ongoing
- Variable interest rates: over 95% of all loans
- Hedging agreements in place in order to mitigate interest rate risk.
- Total amount of covered bonds issued EUR 2.25 billion.

OPMB Asset Pool A Characteristics

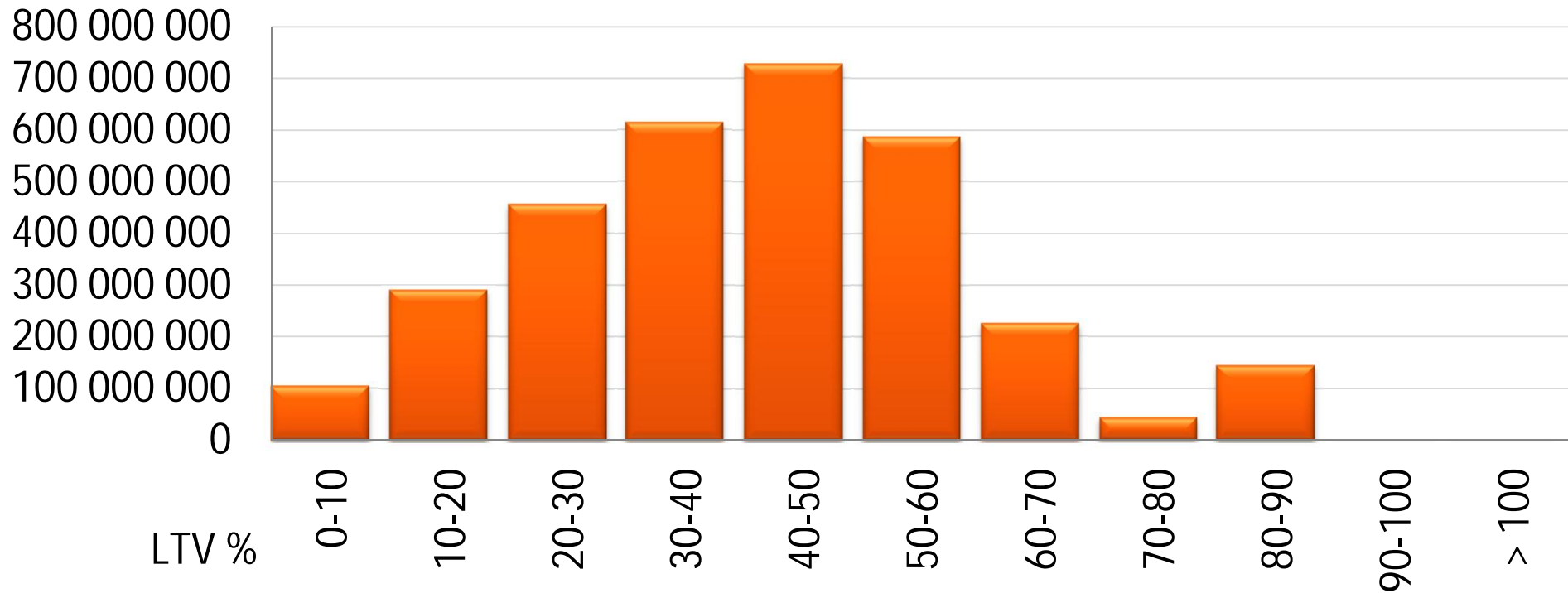
Loans by size



OPMB Asset Pool A Characteristics

Loans by LTV

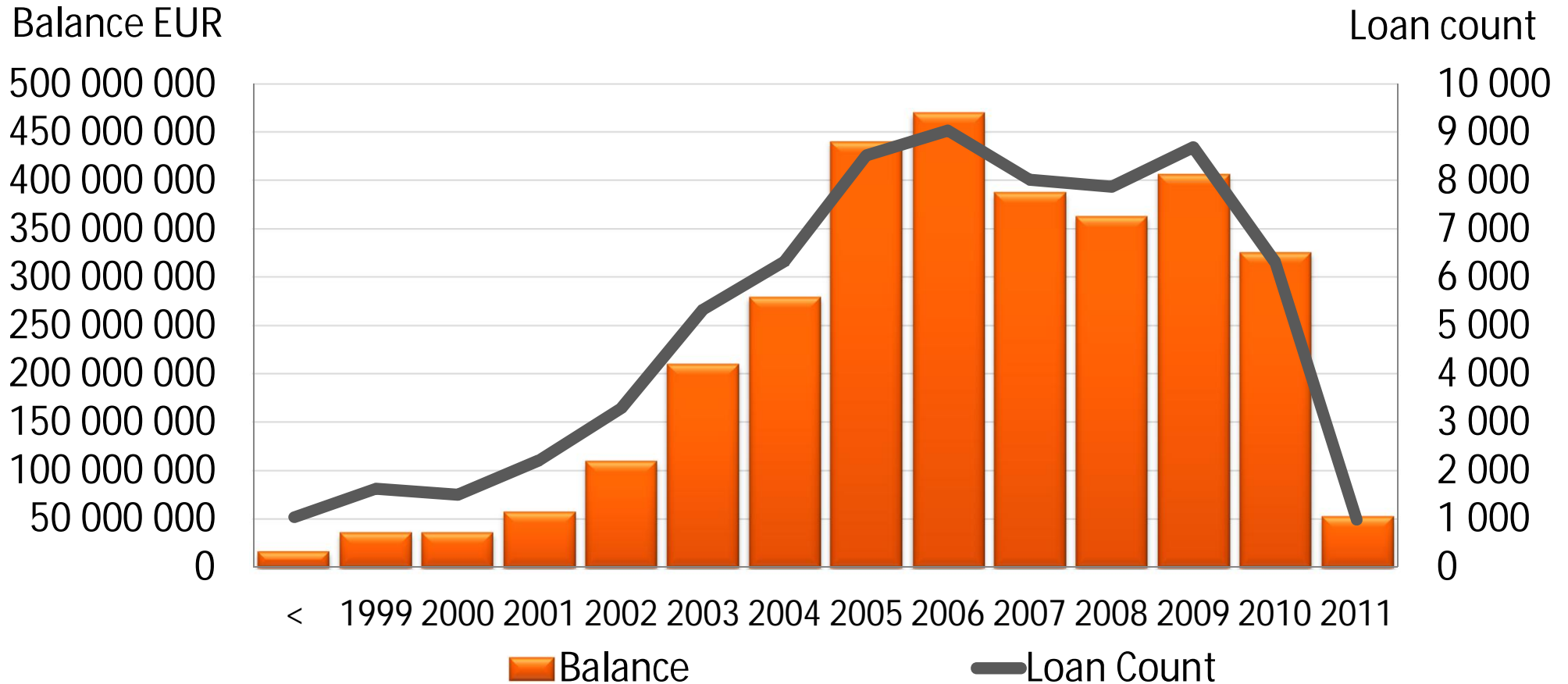
Balance EUR



- Total assets EUR 3.2 billion
- Eligible Cover Pool assets EUR 3.2 billion
- Weighted Average indexed LTV of 43.0%
- Over-collateralisation 42.2%

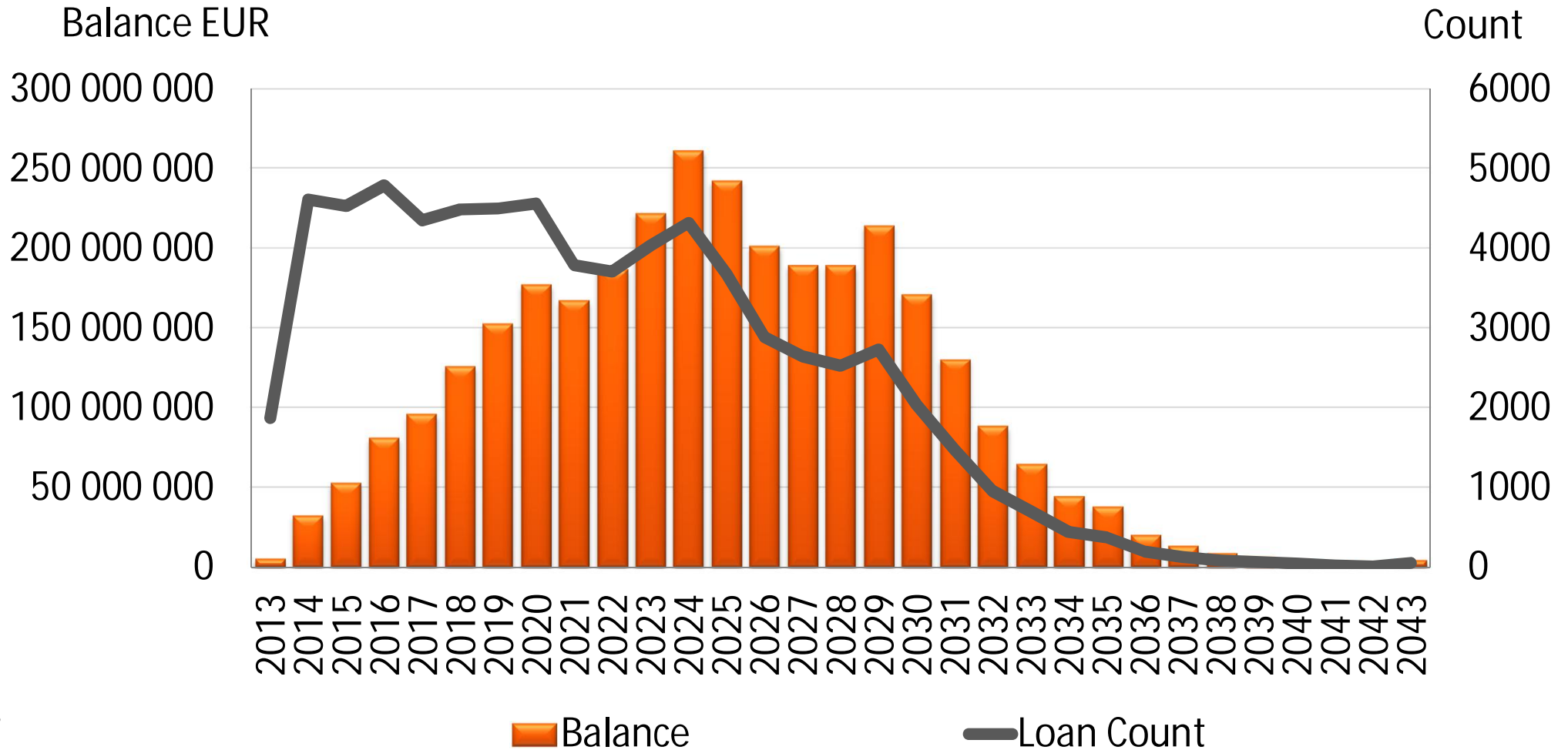
OPMB Asset Pool A Characteristics

Loans by origination year



OPMB Asset Pool A Characteristics

Loans by maturity



OPMB Asset Pool A Characteristics

Geographical distribution

- 1 Southern Finland
- 2 Western Finland
- 3 Eastern Finland
- 4 Oulu region
- 5 Lapland
- 6 Åland

